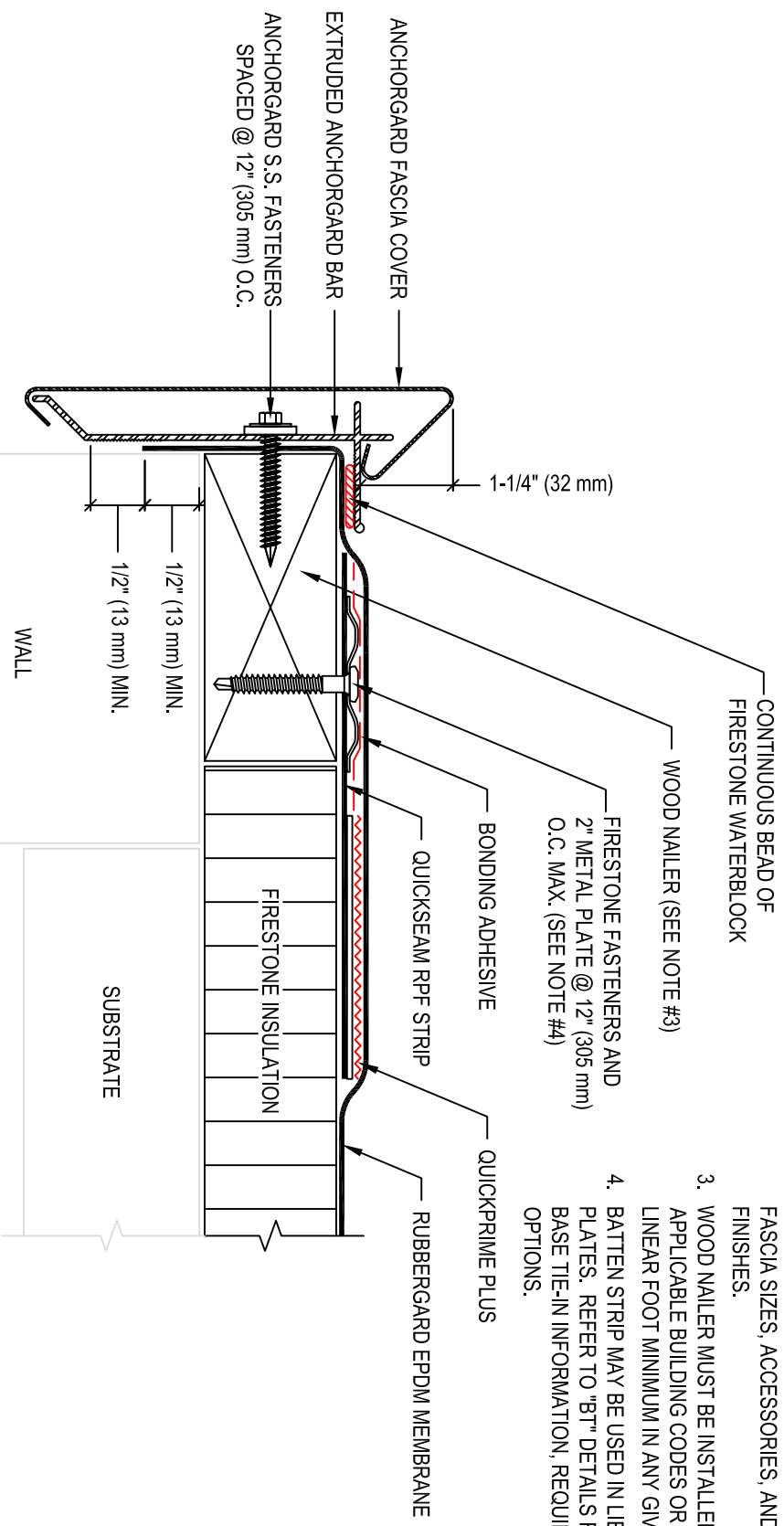


- NOTES:
1. REFER TO FIRESTONE WEBSITE FOR THE MOST CURRENT INFORMATION.
 2. REFER TO TECHNICAL INFORMATION SHEETS FOR FASCIA SIZES, ACCESSORIES, AND AVAILABLE FINISHES.
 3. WOOD NAILEER MUST BE INSTALLED TO MEET APPLICABLE BUILDING CODES OR 200 LBS PER LINEAR FOOT MINIMUM IN ANY GIVEN DIRECTION.
 4. BATTEN STRIP MAY BE USED IN LIEU OF 2" METAL PLATES. REFER TO "BT" DETAILS FOR SPECIFIC BASE TIE-IN INFORMATION, REQUIREMENTS, AND OPTIONS.



MAXIMUM WARRANTY: **20 YEARS**

ROOF EDGE WITH ANCHORFASCIA STANDARD AND QUICKSEAM RPF STRIP

RUBBERGARD™ EPDM

ACCEPTABLE SYSTEMS: MAS

ISSUE/REVISION DATE:

6/10/2014

NOT TO SCALE

DETAIL NO.

RE-2