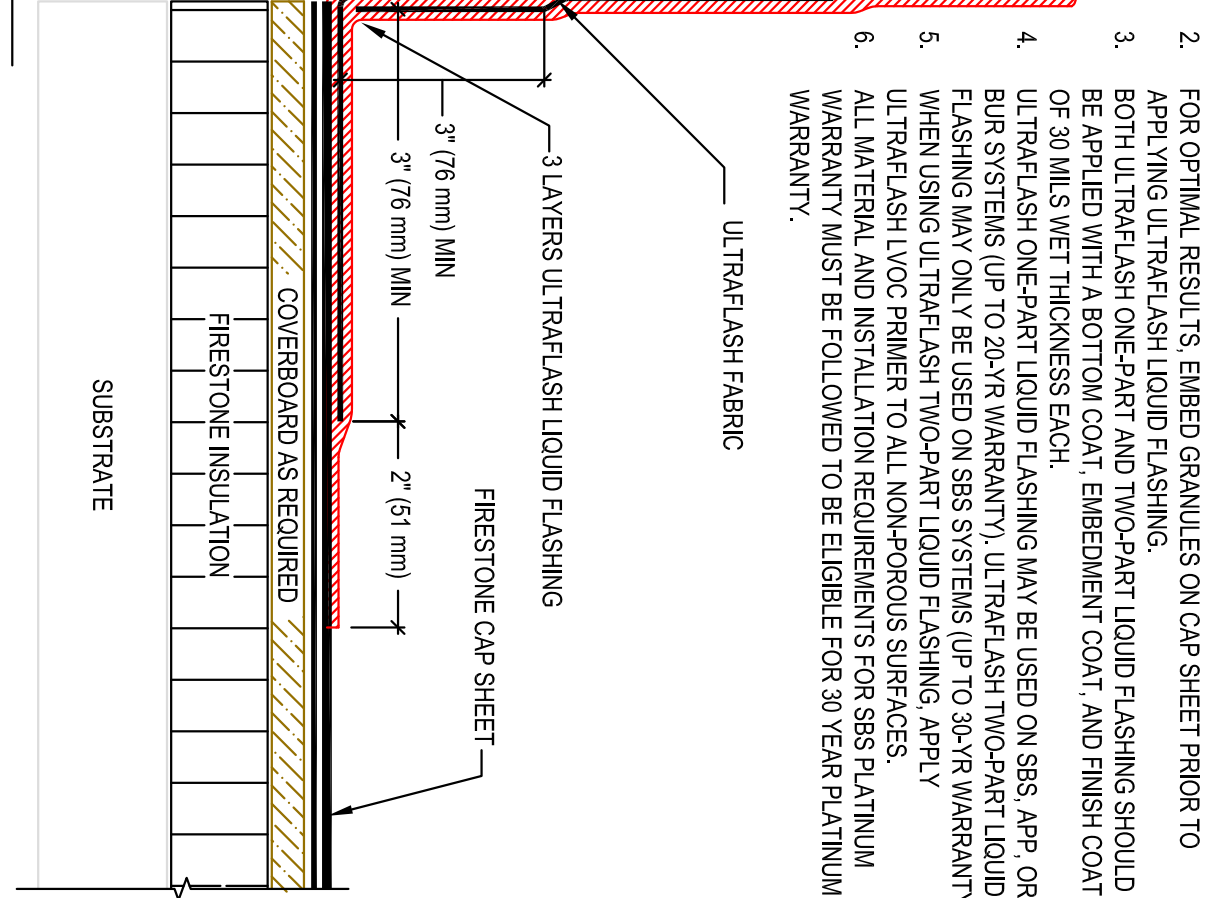
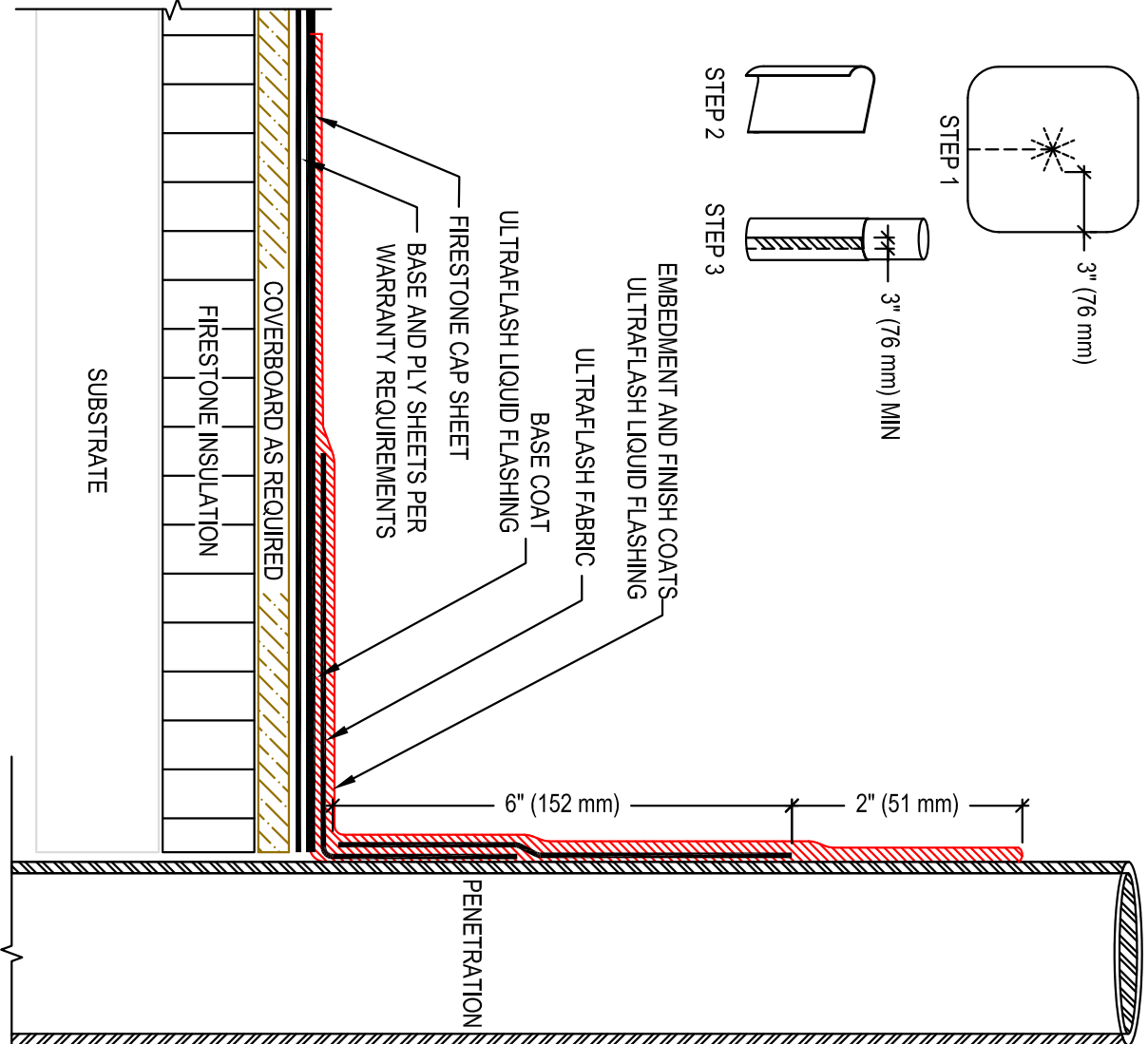
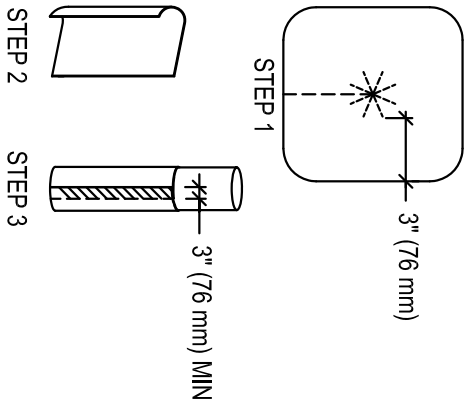


**ULTRAFASH FABRIC**



- NOTES:**
1. REFER TO FIRESTONE WEBSITE FOR MOST CURRENT INFORMATION.
  2. FOR OPTIMAL RESULTS, EMBED GRANULES ON CAP SHEET PRIOR TO APPLYING ULTRAFASH LIQUID FLASHING.
  3. BOTH ULTRAFASH ONE-PART AND TWO-PART LIQUID FLASHING SHOULD BE APPLIED WITH A BOTTOM COAT, EMBEDMENT COAT, AND FINISH COAT OF 30 MILS WET THICKNESS EACH.
  4. ULTRAFASH ONE-PART LIQUID FLASHING MAY BE USED ON SBS, APP, OR BUR SYSTEMS (UP TO 20-YR WARRANTY). ULTRAFASH TWO-PART LIQUID FLASHING MAY ONLY BE USED ON SBS SYSTEMS (UP TO 30-YR WARRANTY). WHEN USING ULTRAFASH TWO-PART LIQUID FLASHING, APPLY ULTRAFASH LVOC PRIMER TO ALL NON-POROUS SURFACES.
  5. ALL MATERIAL AND INSTALLATION REQUIREMENTS FOR SBS PLATINUM WARRANTY MUST BE FOLLOWED TO BE ELIGIBLE FOR 30 YEAR PLATINUM WARRANTY.
  - 6.

**Firestone**  
 BUILDING PRODUCTS  
**NOBODY COVERS YOU BETTER.™**  
 www.firestonebpco.com

**ULTRAFASH™ PIPE FLASHING**  
 ASPHALT SYSTEMS  
 ACCEPTABLE SYSTEMS: MODIFIED BITUMEN

ISSUE/REVISION  
 DATE: 04/28/2015  
 NOT TO SCALE

**MAXIMUM WARRANTY: 30 YEARS**

DETAIL NO.  
**MB-P-7**