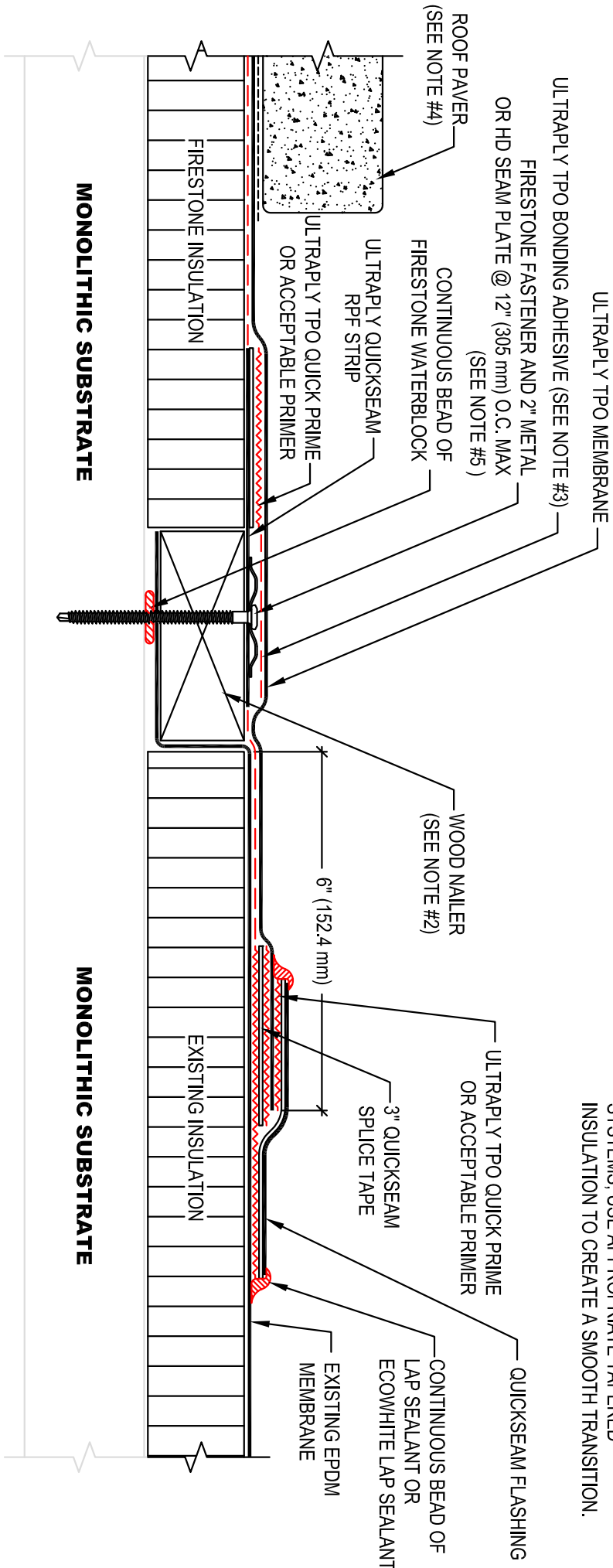


- NOTES:
- REFER TO FIRESTONE WEBSITE FOR MOST CURRENT INFORMATION.
 - WOOD NAILER MUST BE INSTALLED TO MEET APPLICABLE BUILDING CODES OR PROVIDE 200 PER LINEAL FOOT IN ANY GIVEN DIRECTION.
 - BONDING ADHESIVE REQUIRED BETWEEN MEMBRANE AND INSULATION FOR FULLY ADHERED SYSTEMS.
 - FIRESTONE ROOF PAVES (MIN 10LBS (4.5KG) PER SQ. FT.) INSTALLED OVER PROTECTION LAYER REQUIRED FOR BALLASTED SYSTEMS.
 - BATTEN STRIP MAY BE USED IN LIEU OF METAL STRIPS FOR MASS AND FULLY ADHERED SYSTEMS ONLY. REFER TO "UT-BT" DETAILS FOR SPECIFIC BASE TIE-IN INFORMATION, REQUIREMENTS AND OPTIONS.
 - WHEN CHANGE IN ELEVATION OCCURS BETWEEN SYSTEMS, USE APPROPRIATE TAPERED INSULATION TO CREATE A SMOOTH TRANSITION.



TIE-IN TO EXISTING ROOF SYSTEMS NOT WARRANTED BY FIRESTONE

TIE-IN ULTRAPLY TPO SYSTEM TO EXISTING EPDM SYSTEM (MONOLITHIC SUBSTRATE)

ULTRAPLY™ TPO ACCEPTABLE SYSTEMS: ALL

MAXIMUM WARRANTY: **NONE**

ISSUE / REVISION DATE: 8/20/2015

DETAIL NO. **UT-BT-20**

NOT TO SCALE