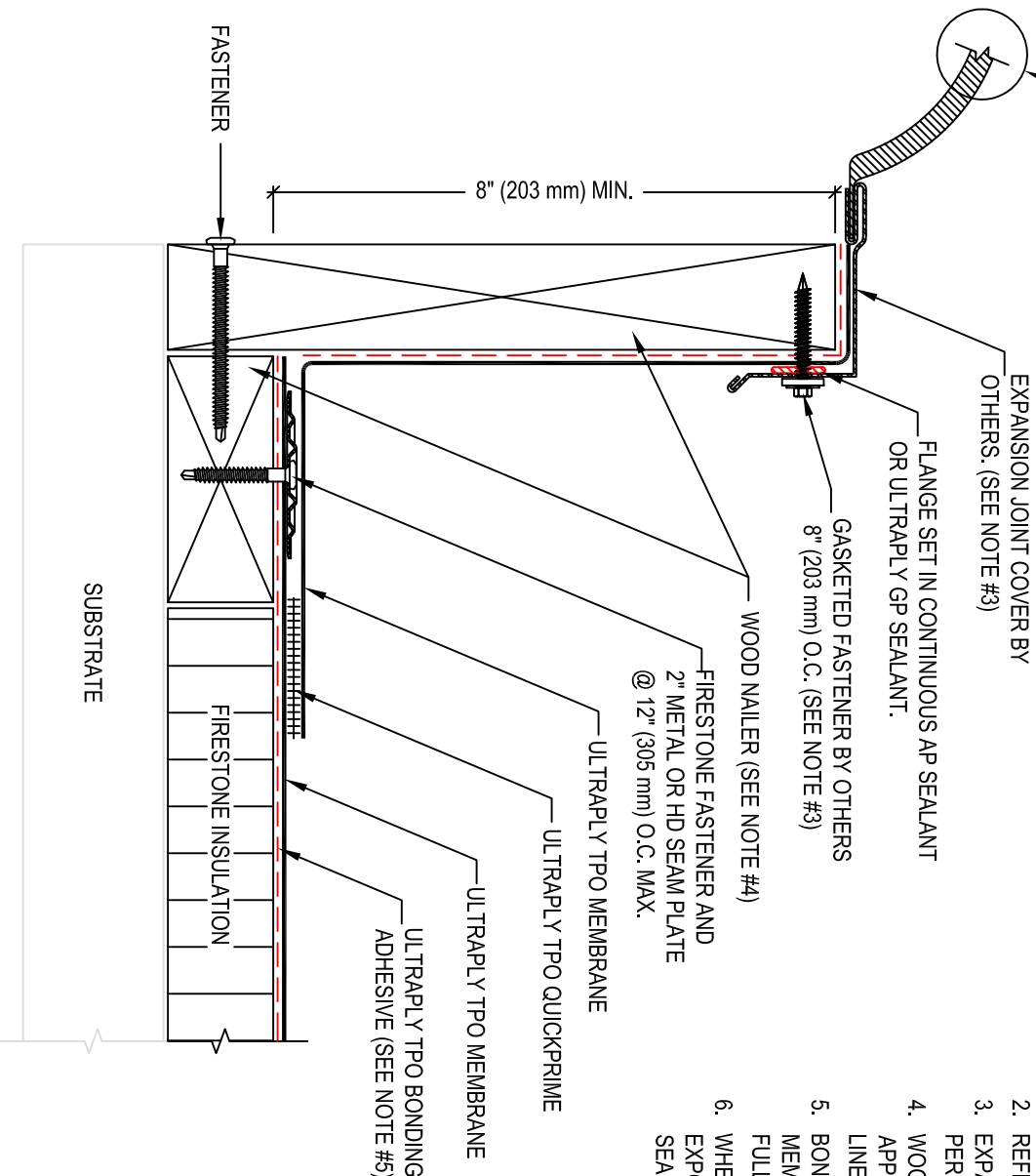


CURB TO WALL OR CURB TO CURB AS REQUIRED



EXPANSION JOINT COVER BY OTHERS. (SEE NOTE #3)

FLANGE SET IN CONTINUOUS AP SEALANT OR ULTRAPLY GP SEALANT.

GASKETED FASTENER BY OTHERS 8" (203 mm) O.C. (SEE NOTE #3)

WOOD NAILER (SEE NOTE #4)

FIRESTONE FASTENER AND 2" METAL OR HD SEAM PLATE @ 12" (305 mm) O.C. MAX.

ULTRAPLY TPO MEMBRANE

ULTRAPLY TPO QUICKPRIME

ULTRAPLY TPO MEMBRANE

ULTRAPLY TPO BONDING ADHESIVE (SEE NOTE #5)

SUBSTRATE

FIRESTONE INSULATION

FASTENER

8" (203 mm) MIN.

- NOTES:
1. REFER TO FIRESTONE WEBSITE FOR MOST CURRENT INFORMATION.
 2. REFER TO DETAIL UT-LS-1 OR 2 FOR WELD WIDTH.
 3. EXPANSION JOINT COVER INSTALLED AND SECURED PER MANUFACTURER'S RECOMMENDATIONS.
 4. WOOD NAILER MUST BE INSTALLED TO MEET APPLICABLE BUILDING CODES OR 200 LBS PER LINEAR FOOT IN ANY GIVEN DIRECTION.
 5. BONDING ADHESIVE REQUIRED BETWEEN MEMBRANE AND INSULATION FOR FULLY ADHERED SYSTEM.
 6. WHEN REINFORCEMENT OF TPO MEMBRANE IS EXPOSED, REFER TO UT-LS-14 FOR CUT EDGE SEALANT APPLICATION.

THIS DETAIL IS NOT ACCEPTABLE FOR PAVEMENT OR BALLAST SYSTEMS. CONTACT FIRESTONE FOR ROOF SOLUTIONS.

MAXIMUM WARRANTY: **20 YEARS**

EXPANSION JOINT (MANUFACTURED COVER) WITH WELDED SPICE

ULTRAPLY™ TPO

ACCEPTABLE SYSTEMS: ALL

ISSUE / REVISION DATE: 7/22/2014

NOT TO SCALE

DETAIL NO. **UT-E-8**