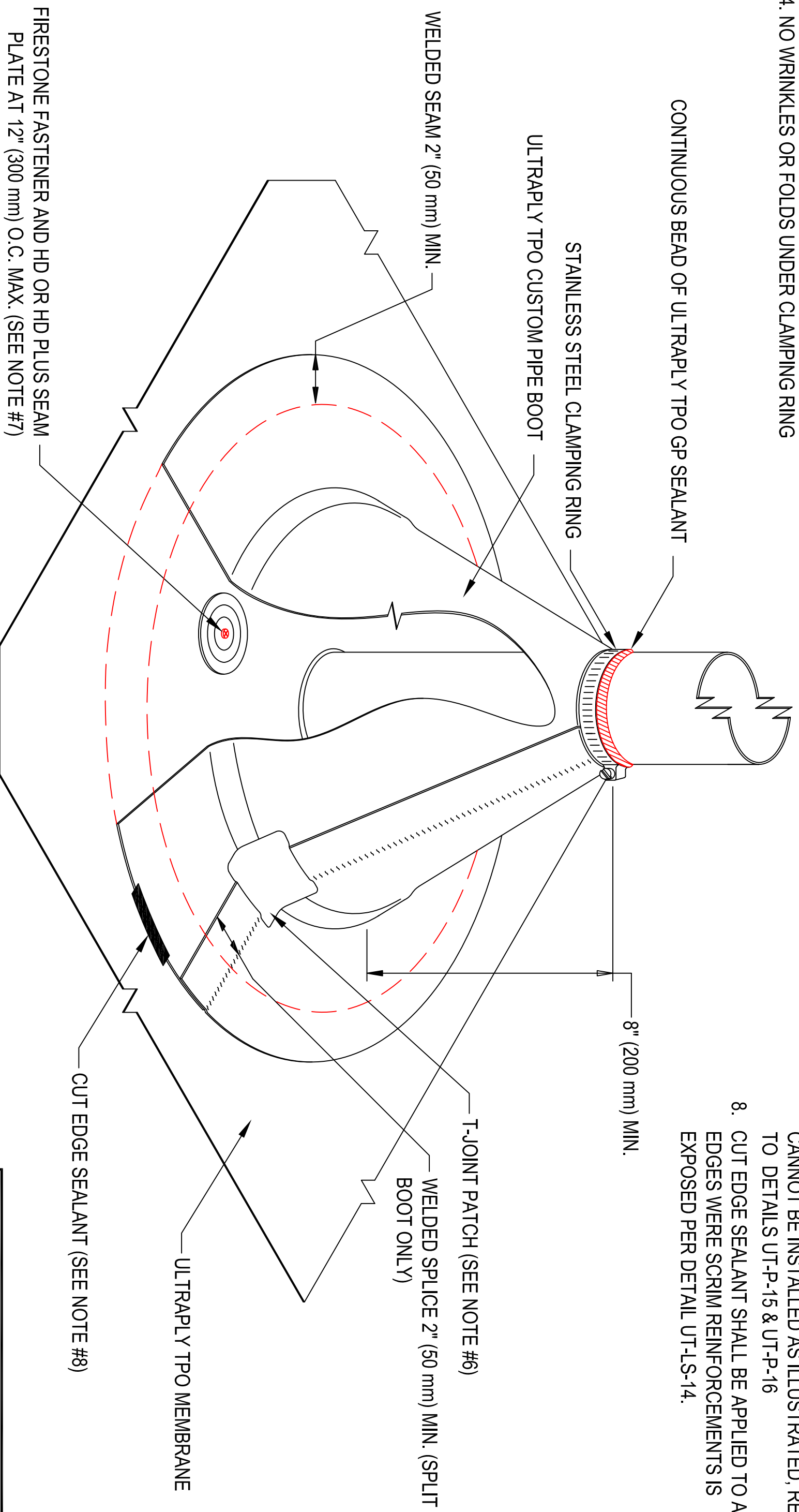


NOTES:


1. REFER TO FIRESTONE WEBSITE FOR THE MOST CURRENT INFORMATION.
2. REMOVE ALL EXISTING FLASHING, LEAD, ETC. PIPE SURFACE MUST BE FREE OF ALL RUST, GREASE, INSULATION, ETC.
3. PIPE MUST BE ANCHORED TO ENSURE STABILITY.
4. NO WRINKLES OR FOLDS UNDER CLAMPING RING



NOTES

5. DO NOT USE WHEN SERVICE LINE TEMP. EXCEEDS 160°F. REFER TO UT-P-6 & UT-P-7.
6. T-JOINT PATCH REQUIRED AT ALL VERTICAL TRANSITIONS ON NON-FACTORY WELDS
7. FIRESTONE FASTENER AND HD SEAM PLATE REQUIRE FOR MAS ONLY. IF FASTENER CANNOT BE INSTALLED AS ILLUSTRATED, REFER TO DETAILS UT-P-15 & UT-P-16
8. CUT EDGE SEALANT SHALL BE APPLIED TO ANY EDGES WERE SCRIM REINFORCEMENTS IS EXPOSED PER DETAIL UT-LS-14.

MAXIMUM WARRANTY: 20 YEARS

 <p>Firestone BUILDING PRODUCTS NOBODY COVERS YOU BETTER.™ www.firestonebpc.com</p>		ROUND PENETRATION WITH CONICAL ULTRAPLY TPO CUSTOM PIPE BOOT	
		ULTRAPLY™ TPO	
ACCEPTABLE SYSTEMS: ALL		ISSUE / REVISION DATE:	DETAIL NO.
7/22/2014		7/22/2014	UT-P-19
NOT TO SCALE			