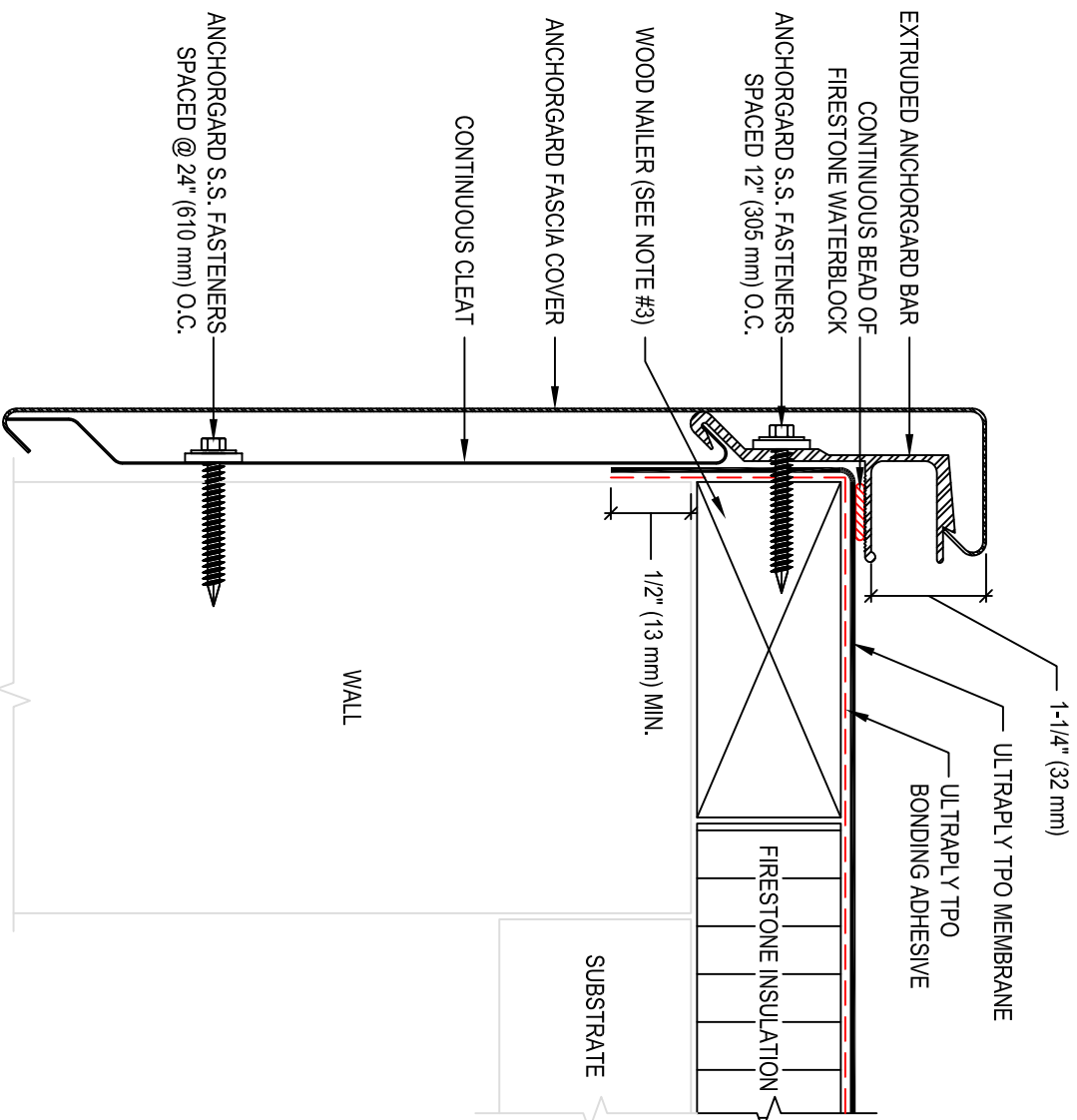


- NOTES:
1. REFER TO FIRESTONE WEBSITE FOR MOST CURRENT INFORMATION.
  2. REFER TO TECHNICAL INFORMATION SHEETS FOR FASCIA SIZES, ACCESSORIES, AND FINISHES AVAILABLE.
  3. WOOD NAILER MUST BE INSTALLED TO MEET APPLICABLE BUILDING CODES OR 200 LBS PER LINEAR FOOT MINIMUM IN ANY GIVEN DIRECTION.



MAXIMUM WARRANTY: **20 YEARS**

ISSUE / REVISION  
DATE:

6/24/2014

DETAIL NO.

**UT-RE-5**

**ROOF EDGE WITH ANCHORGARD EXTENDED FACE**

ULTRAPLY™ TPO

ACCEPTABLE SYSTEMS: ADHERED

**Firestone**  
BUILDING PRODUCTS  
NOBODY COVERS YOU BETTER.™  
www.firestonebpc.com