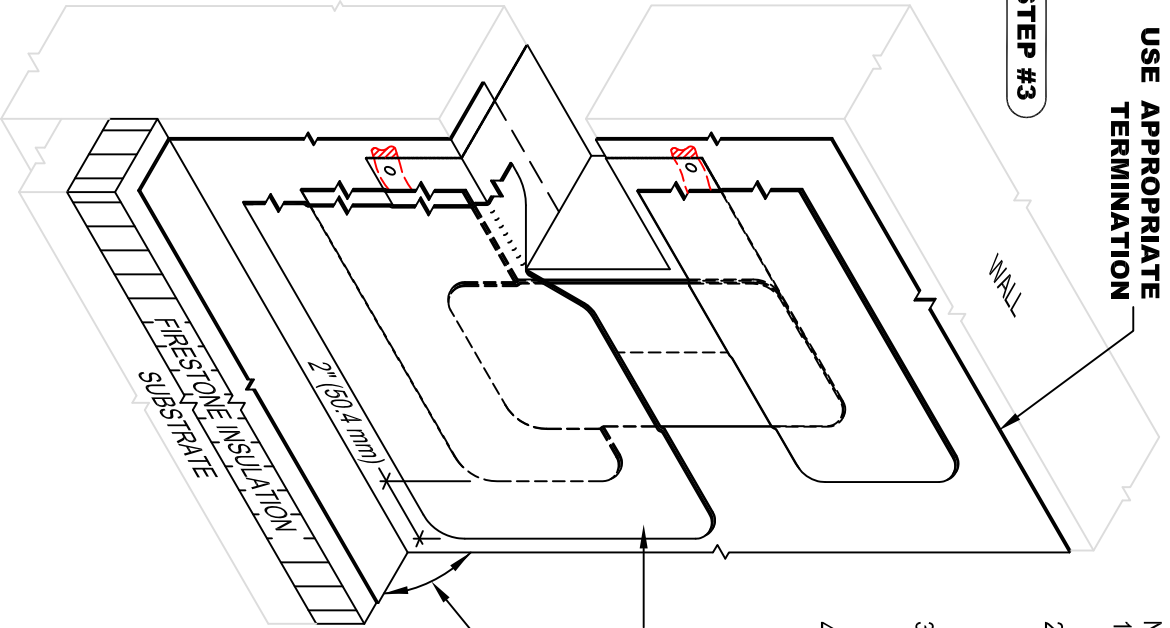
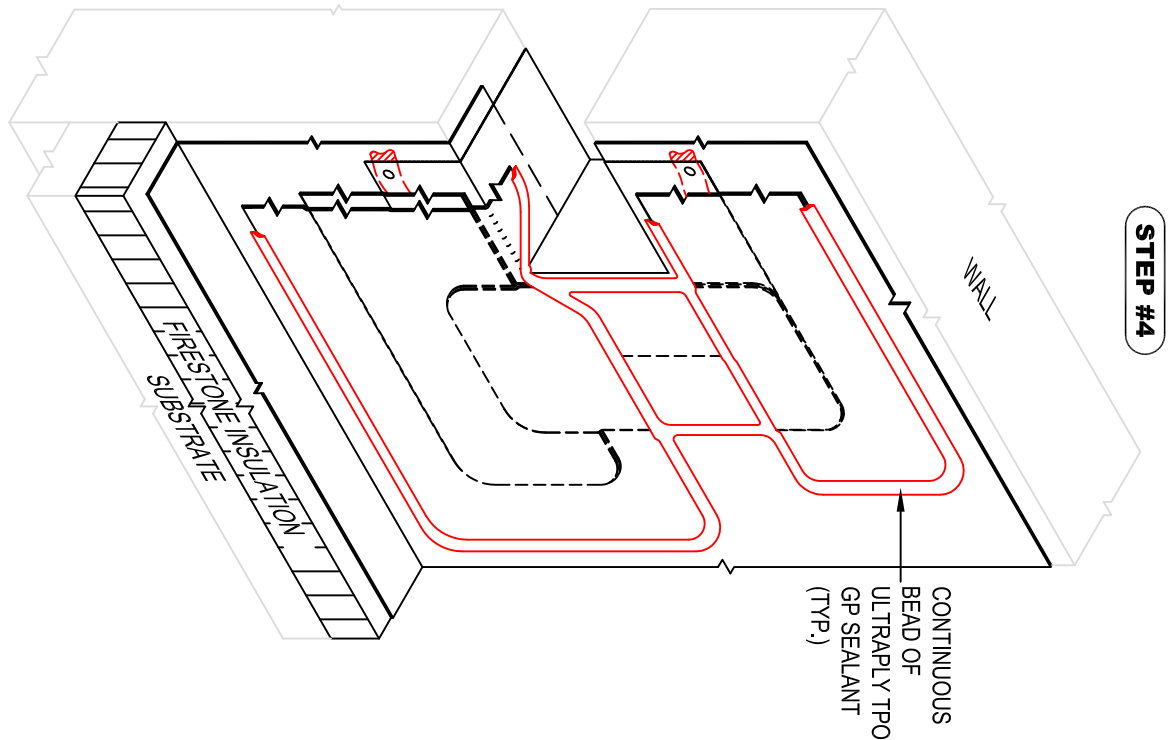


USE APPROPRIATE TERMINATION

STEP #3



STEP #4



- NOTES:
1. REFER TO FIRESTONE WEBSITE FOR MOST CURRENT INFORMATION.
 2. STEP #3 - CENTER STRIP OF 9" QUICKSEAM FORMFLASH OVER 5" QUICKSEAM FLASHING AT BASE OF SCUPPER AS SHOWN.
 3. STEP #4 - APPLY ULTRAPLY TPO GP SEALANT TO PERIMETER OF QUICKSEAM FLASHING.
 4. USE ULTRAPLY TPO QUICKPRIME TO CLEAN AND PRIME TPO MATING SURFACES PRIOR TO INSTALLATION OF QUICKSEAM PRODUCTS

9" QUICKSEAM FLASHING CENTERED OVER 5" QUICKSEAM FLASHING (SEE NOTE #2)

USE APPROPRIATE BASE TIE-IN DETAIL



NOBODY COVERS YOU BETTER.™
www.firestonepbco.com

OVERFLOW THRU-WALL SCUPPER (WELDED SLEEVE) INSTALLATION STEPS 3 & 4

ULTRAPLY™ TPO

ACCEPTABLE SYSTEMS: ALL

MAXIMUM WARRANTY: **15 YEARS**

ISSUE / REVISION DATE:

7/22/2014

NOT TO SCALE

DETAIL NO.

UT-S-2b